



GMT MONTHLY MEMBERSHIP PROGRESS REPORT

Results as of: 6/30/2017

Multiple District 39

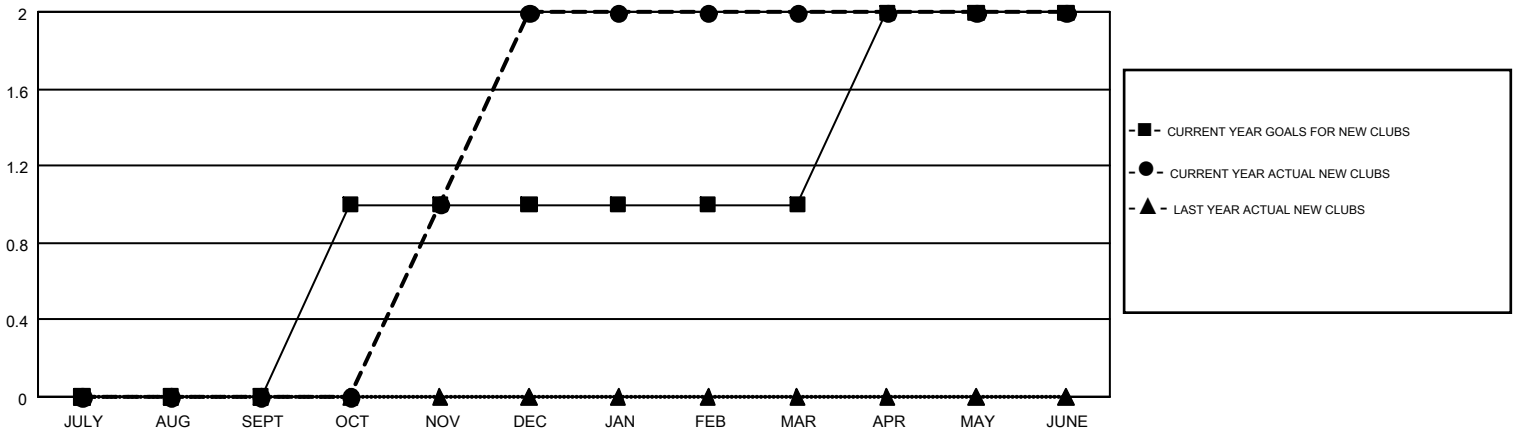
LOCATION: IDAHO

GMT: OPEN

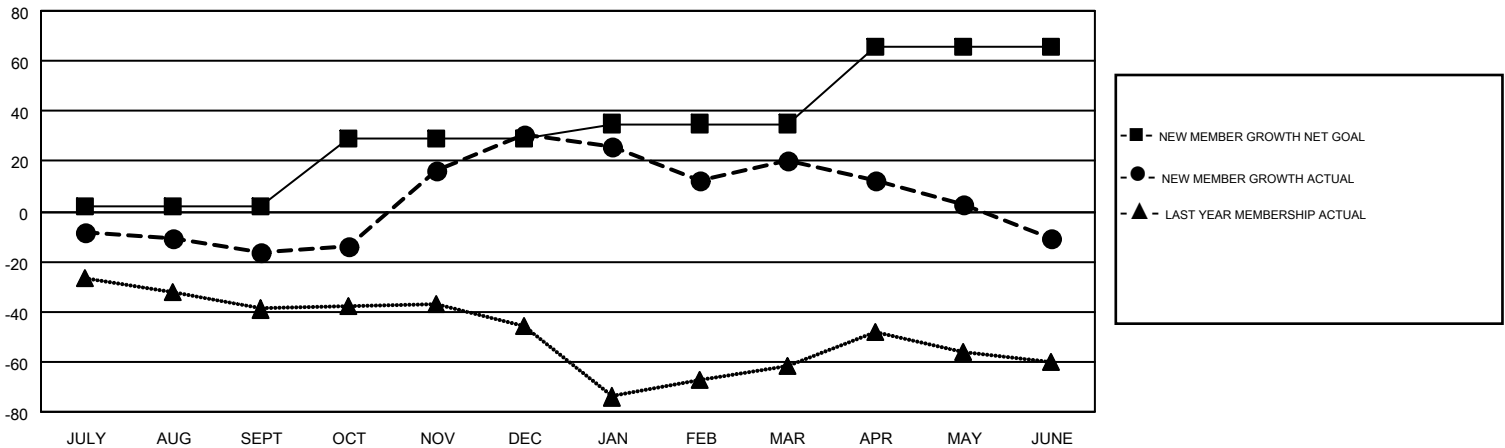
GMT CA 1

Clubs				Members			
RESULTS FOR 2016-2017				RESULTS FOR 2016-2017			
QUARTER	NEW CLUB GOAL	NEW CLUBS	DROPPED CLUBS	QUARTER	NEW MEMBER GROWTH NET GOAL (not reinstated or transfers)	NEW MEMBER GROWTH ACTUAL (not reinstated or transfers)	DROPPED MEMBERS ACTUAL (including transfers)
JULY/AUG/SEPT	0	0	1	JULY/AUG/SEPT	2	26	42
OCT/NOV/DEC	1	2	0	OCT/NOV/DEC	27	80	33
JAN/FEB/MAR	0	0	0	JAN/FEB/MAR	6	36	47
APR/MAY/JUNE	1	0	2	APR/MAY/JUNE	31	62	93

GOALS AND ACTUAL NEW CLUBS CUMULATIVE



GOALS AND ACTUAL MEMBERS CUMULATIVE



DROPPED CLUBS: 3	41 CLUBS OF 68 ADDED 1 OR MORE NEW MEMBERS	<u>GENDER DISTRIBUTION</u>	
<u>DROPPED MEMBERS</u>		MALE	977 (62.51%)
DECEASED	22	FEMALE	586 (37.49%)
CLUB CANCELLED	5	TOTAL FAMILY UNIT MEMBERS	408
OTHER	188	FAMILY MEMBERS PAYING HALF DUES	211
TOTAL	215	CLICK HERE FOR CUMULATIVE MEMBERSHIP DATA	